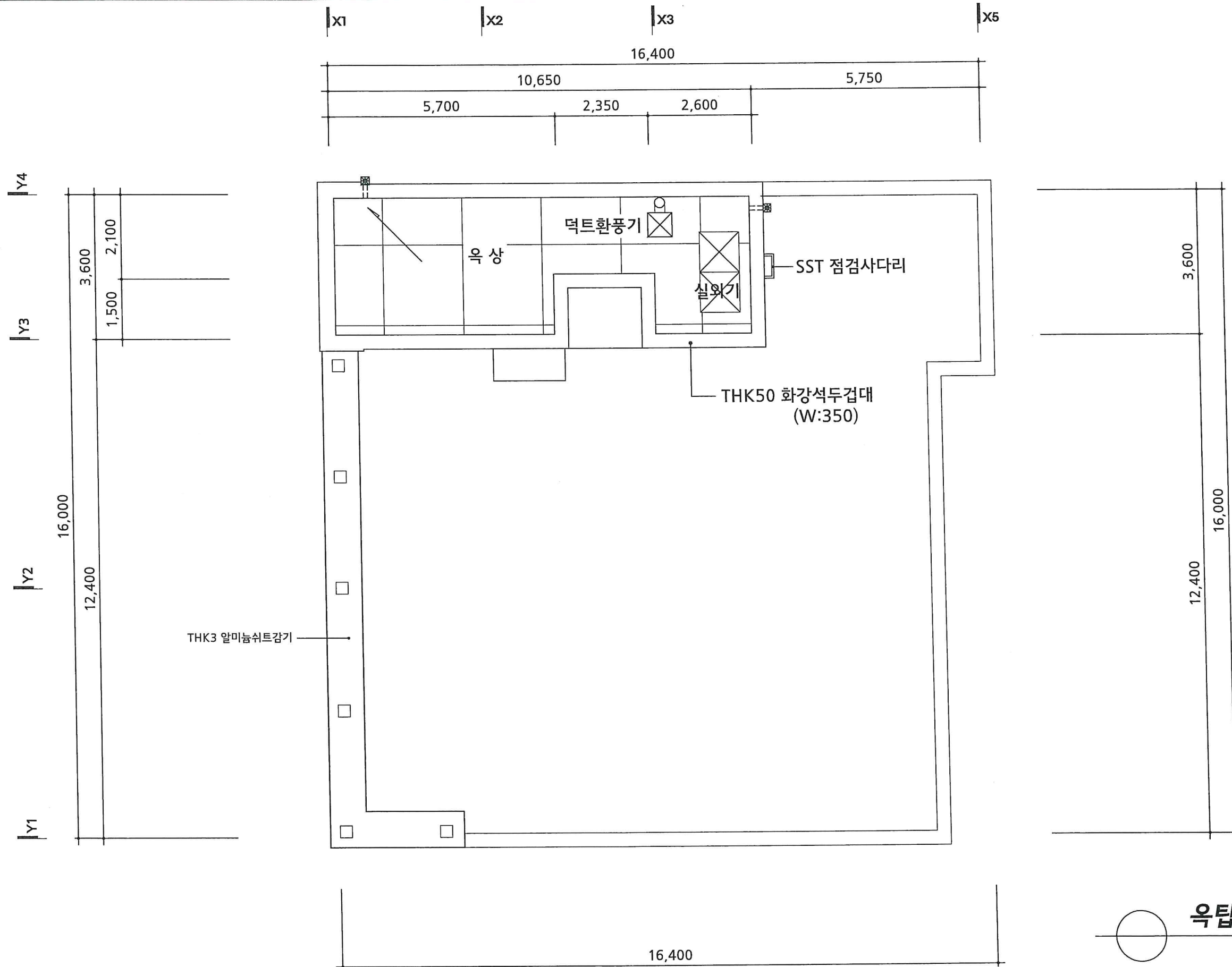
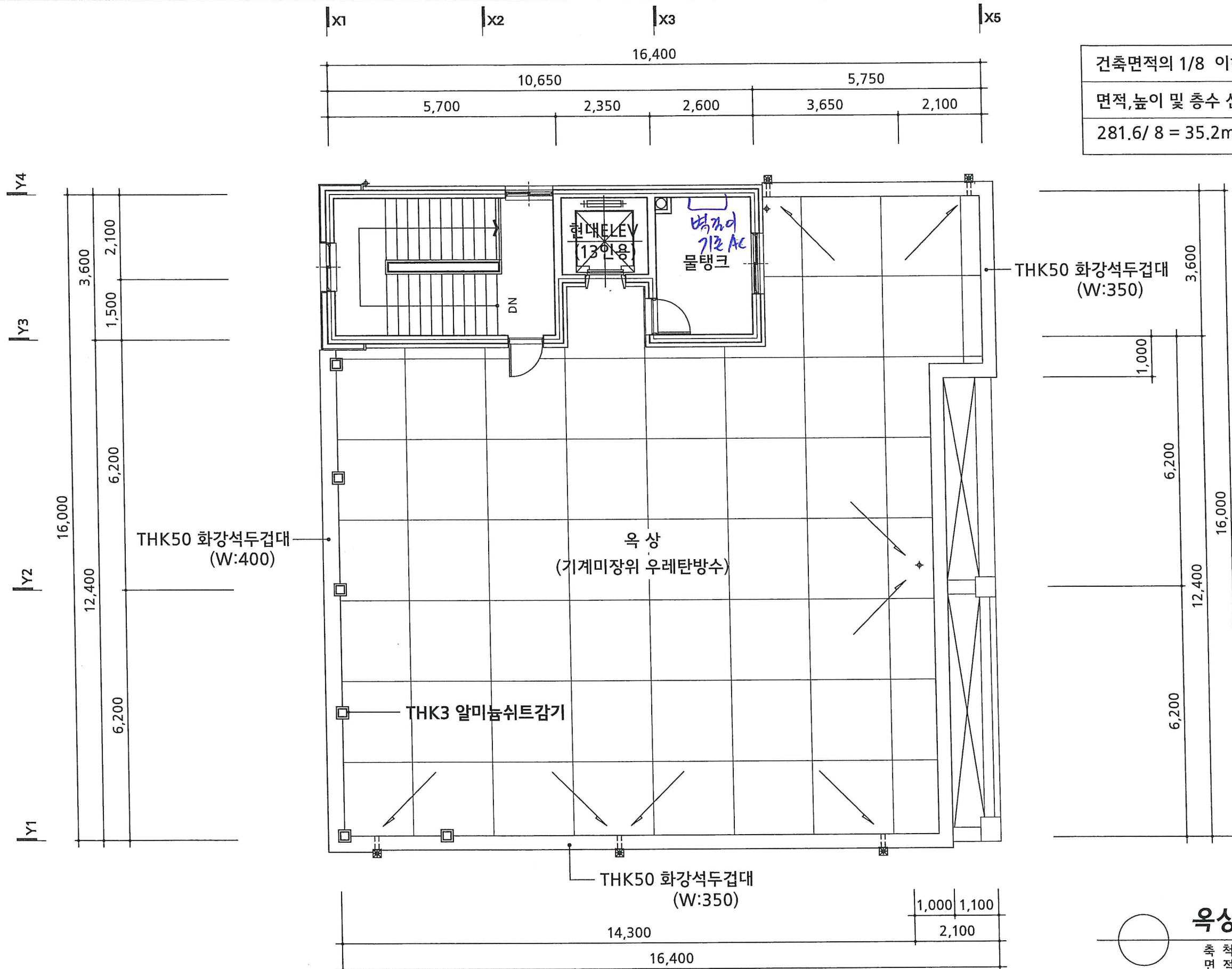


AC




**옥탑 옥상평면도**  
 축척: 1/100

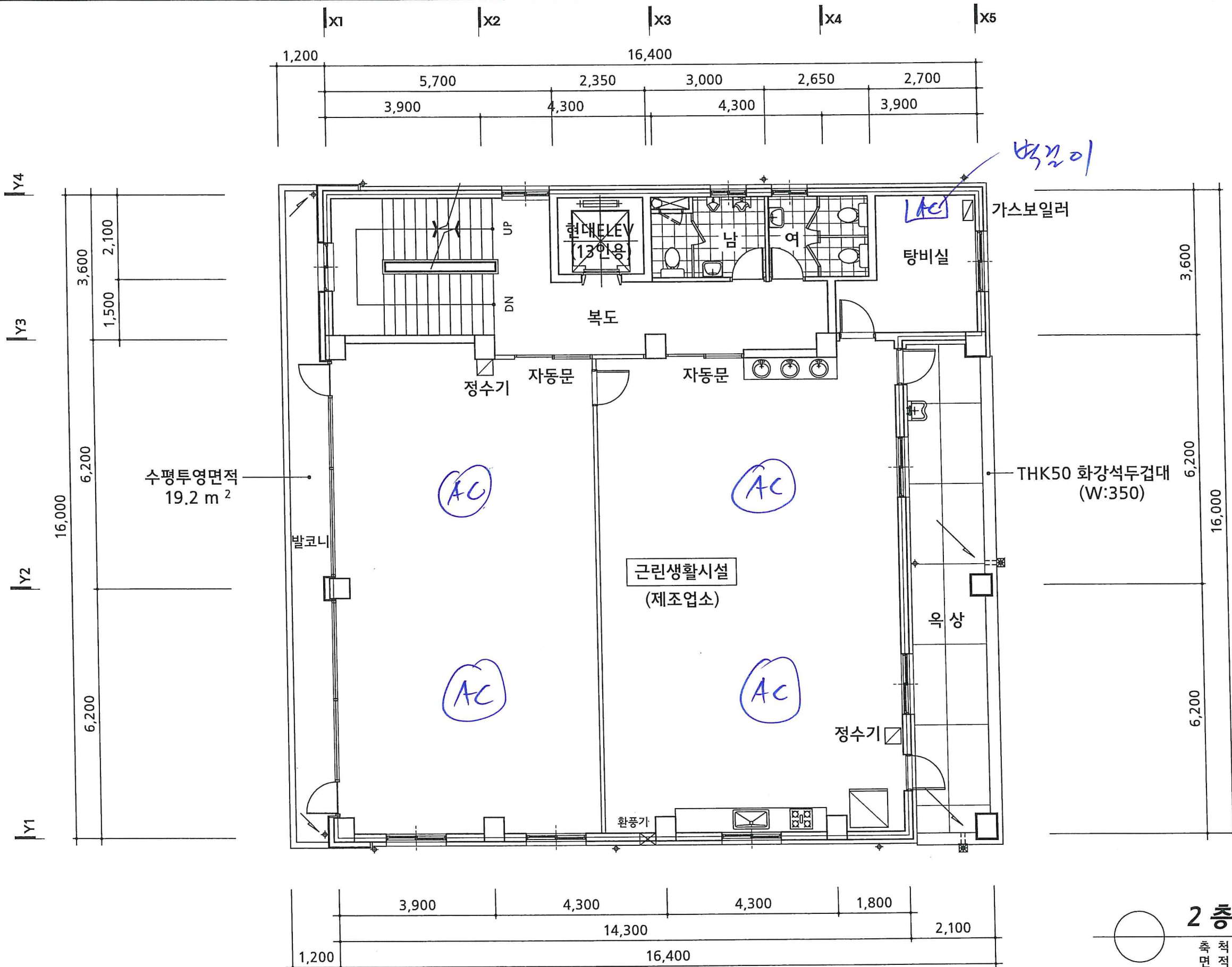
AC



건축면적의 1/8 이하이므로  
면적, 높이 및 층수 산입하지 않음  
 $281.6 / 8 = 35.2\text{m}^2 > 34.82\text{m}^2$

**옥상 평면도**  
축척: 1/100  
면적: (34.82)m<sup>2</sup> (10.5평)

AC



**2 층 평면도**  
 축척: 1/100  
 면적: 236.36 m<sup>2</sup> (71.5평)



# AC 에어컨 (시스템. 냉난방)

